



# GAT MONTHLY MEMBERSHIP PROGRESS REPORT

Results as of: 2/28/2023

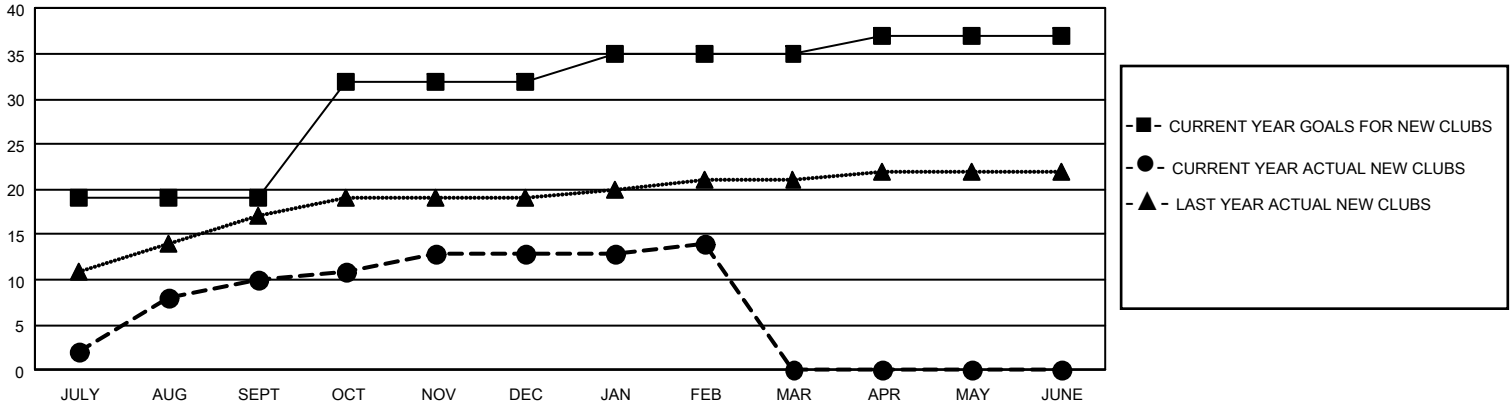
## GAT Constitutional Area 5 - MD 300 Taiwan

REPORT DOES NOT INCLUDE CLUBS IN UNDISTRICTED AREAS.

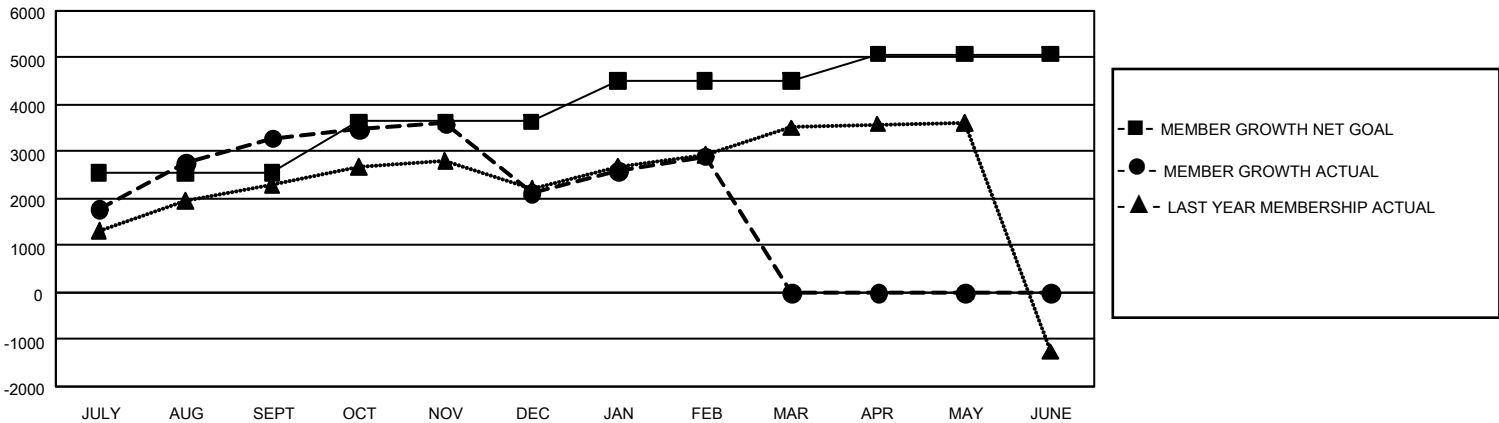
Clubs			
RESULTS FOR 2022-2023			
QUARTER	NEW CLUB GOAL	NEW CLUBS	DROPPED CLUBS
JULY/AUG/SEPT	57	10	8
OCT/NOV/DEC	39	3	4
JAN/FEB/MAR	9	1	4
APR/MAY/JUNE	6	0	0

Members			
RESULTS FOR 2022-2023			
QUARTER	MEMBER GROWTH NET GOAL	MEMBER GROWTH ACTUAL	DROPPED MEMBERS ACTUAL (including transfers)
JULY/AUG/SEPT	2540	4,533	896
OCT/NOV/DEC	1100	826	1,853
JAN/FEB/MAR	864	1,061	162
APR/MAY/JUNE	573	0	0

GOALS AND ACTUAL NEW CLUBS CUMULATIVE



GOALS AND ACTUAL MEMBERS CUMULATIVE



DROPPED CLUBS: 16	
<b>DROPPED MEMBERS</b>	
DECEASED	80
CLUB CANCELLED	18
OTHER	2,813
<b>TOTAL</b>	<b>2,911</b>

950 CLUBS OF 1,115 ADDED 1 OR MORE NEW MEMBERS

[CLICK HERE FOR CUMULATIVE MEMBERSHIP DATA](#)

GENDER DISTRIBUTION	
MALE	27,509 (66.05%)
FEMALE	14,124 (33.91%)
NON BINARY	0 (0.00%)
PREFER NOT TO ANSWER	14 (0.03%)
<b>TOTAL FAMILY UNIT MEMBERS</b>	<b>6,945</b>
<b>FAMILY MEMBERS PAYING HALF DUES</b>	<b>4,172</b>